

SPEC SHEET + MEASUREMENTS



Nike Team rLegend Long Sleeve Tee. NKHQ4550

Product photo



This is the stuff of which legends are made. The Team rLegend Long Sleeve Tee is built from sustainable recycled polyester and powered by Dri-FIT technology—so you'll get peak performance with a lower environmental impact.

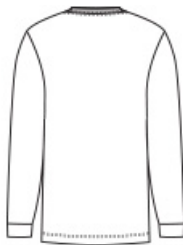
- 4-ounce, 100% polyester jersey with at least 75% recycled content
- Neck tape for durability
- Heat-transfer label for tag-free comfort
- Contrast heat transfer Swoosh logo on left chest

Care Instructions Machine Wash Cold. Wash With Like Colors. Do Not Use Softeners. Remove Immediately. Do Not Allow To Lay On Itself When Wet. Do Not Use Bleach. Tumble Dry Low. Cool Iron. Do Not Dry Clean.

Sketches



front



back

SPEC SHEET + MEASUREMENTS



Nike Team rLegend Long Sleeve Tee. NKHQ4550

PRODUCT MEASUREMENTS

	S	M	L	XL	2XL	3XL	4XL
Body Length at Back	29 1/2	30	30 1/2	31	32	33	34
Chest	19 3/4	21 1/2	23	24	26	28	30
Set-In Sleeve Length	36	37	37 1/2	38	38 1/2	39 1/2	40

Body Length at Back: Measured from high point shoulder to finished hem at back.

Chest: Measured across the chest one inch below armhole when laid flat.

Set-In Sleeve Length: Measure from Center Back neck to shoulder point to sleeve hem.

SIZE CHARTS

	S	M	L	XL	2XL	3XL	4XL
Chest	35-37 1/2	37 1/2-41	41-44	44-48 1/2	48 1/2-53 1/2	53 1/2-58	58-63

SPEC SHEET + MEASUREMENTS



Nike Team rLegend Long Sleeve Tee. NKHQ4550

HOW TO MEASURE



CHEST

Measure under the arm and around the fullest part of the chest with arms down, keeping tape horizontal.

COLORS



Black
PMS BLACK
C



Carbon
Heather
PMS 424C



College Navy
PMS 533C



White